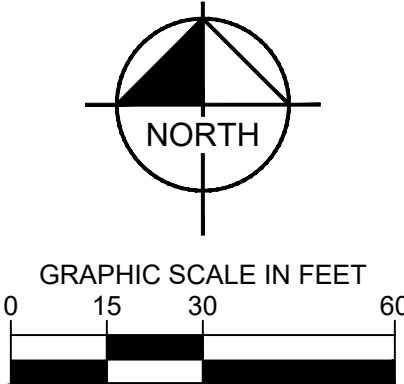
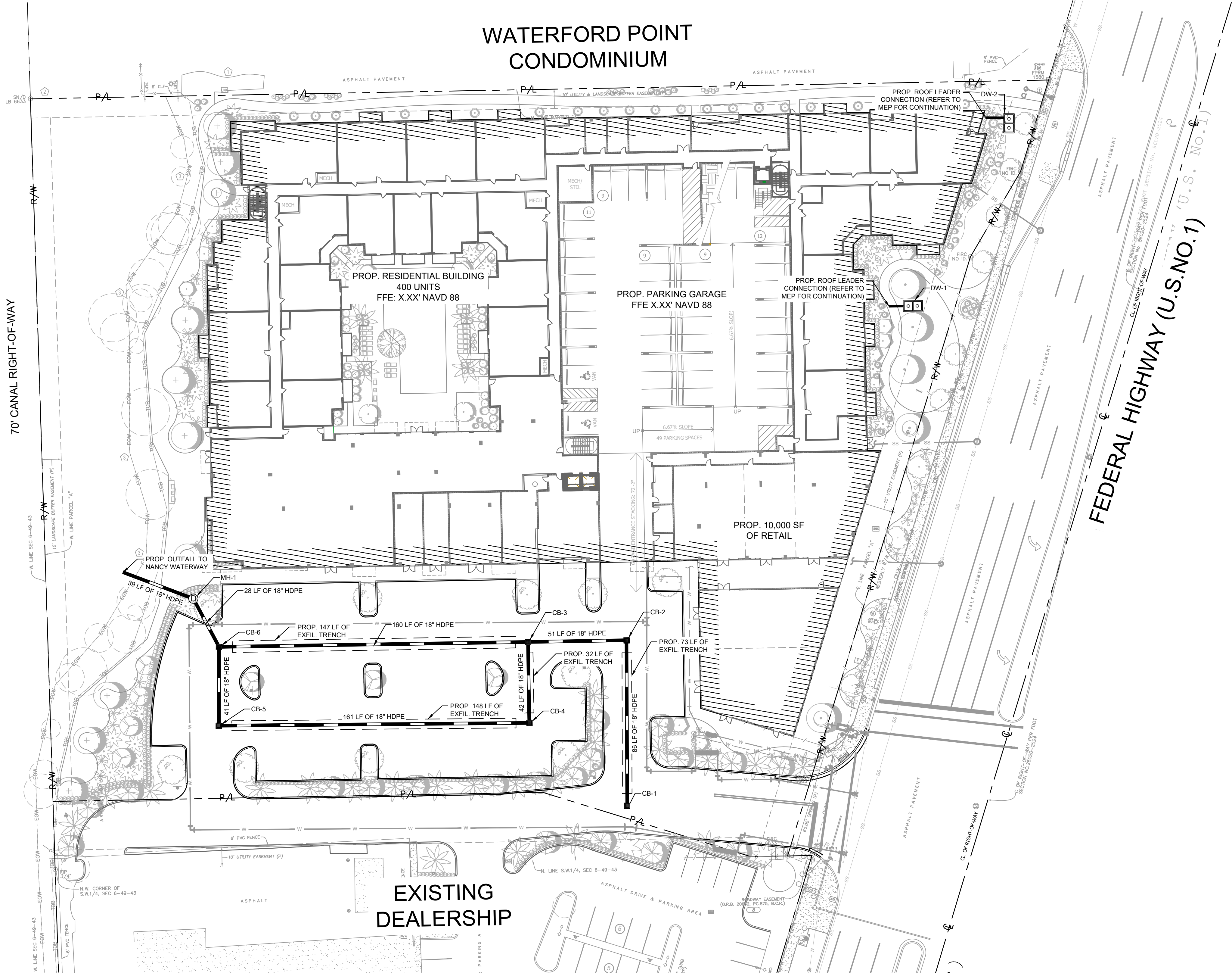


Plotted By:Abilad, Emmanuel Sheet Set:MILL CREEK POMPANO Layout(C-302) DRAINAGE PLAN September 09, 2025 09:37:27pm K:\FLL_Civil\043_08\043175014 Mill Creek POMPANO\Design\CADD\PlanSheets\C-DRAN.dwg
This document, together with the concepts and designs presented herein, is an instrument of service, as an instrument of service, is intended only for the specific purpose and client for which it was prepared. Reuse of and improper reliance on this document without written authorization and adaptation by Kintley-Horn and Associates, Inc. shall be without liability to Kintley-Horn and Associates, Inc.

NANCY WATERWAY
70' CANAL RIGHT-OF-WAY



LEGEND

- P — R/W — PROPERTY LINE AND/OR RIGHT-OF-WAY
- C — CENTERLINE OF R/W
- — — — — EXISTING DRAINAGE STORM LINE
- PROPOSED INLET
- PROPOSED CURB INLET
- PROPOSED YARD DRAIN
- PROPOSED DRAINAGE MANHOLE
- PROPOSED DRAINAGE PIPE
- PROPOSED EXFILTRATION TRENCH
- PROPOSED SANITARY PIPE
- PROPOSED WATER LINE PIPE

DRAINAGE NOTES

- DRAINAGE PIPE SHALL BE HIGH DENSITY POLYETHYLENE (HDPE) OR REINFORCED CONCRETE (RCP), THE USE OF RCP PIPE FOR PUBLIC ROADWAY CROSSINGS IS PREFERRED.
- CATCH BASINS, INLETS AND JUNCTION BOXES SHALL NOT BE INSTALLED IN DRIVEWAYS.
- PRIOR TO BACKFILLING EXFILTRATION TRENCHES, DRAINAGE INLETS OR MANHOLES, THE CONTRACTOR SHALL NOTIFY THE ENGINEERING INSPECTOR FOR AN INSPECTION.
- DRAINAGE STRUCTURES SHALL BE CLEANED PRIOR TO ACCEPTANCE BY CITY.
- ALL PIPES SHALL BE LAID IN DRY TRENCH. ALL MUCK OR UNSUITABLE MATERIALS IN TRENCHES, INLETS OR MANHOLES SHALL BE REMOVED AND BACKFILLED WITH SELECTED MATERIAL APPROVED BY THE ENGINEER.
- MINIMUM COVER FOR HDPE PIPE UNDER ASPHALT SHALL BE 24-INCH COMPACTED LIMEROCK BASE. MINIMUM COVER FOR PIPE UNDER GRASS SHALL BE 18" COMPACTED SUBGRADE.
- THE CONTRACTOR SHALL MAINTAIN EXISTING DRAINAGE PATTERNS AND PREVENT ADVERSE FLOODING OF THE TRAVEL LANES DURING CONSTRUCTION.
- MAINTENANCE ACCESS SHALL BE PROVIDED ON BOTH SIDES OF EXFILTRATION TRENCHES IN THE FORM OF MANHOLES OR CATCH BASINS. THE MAXIMUM DISTANCE BETWEEN STORM STRUCTURES SHALL NOT EXCEED TREE HUNDRED (300) FEET.
- ALL EXFILTRATION SYSTEMS SHALL BE DESIGNED IN ACCORDANCE WITH THE FLORIDA DEPARTMENT OF TRANSPORTATION DOCUMENT TITLED "DRAINAGE DESIGN GUIDE", LATEST EDITION.
- GEOTEXTILE MATERIALS USED IN THE CONSTRUCTION OF EXFILTRATION TRENCHES SHALL BE IN ACCORDANCE WITH THE CRITERIA OF FLORIDA DEPARTMENT OF TRANSPORTATION'S DESIGN STANDARDS LATEST EDITION AND CITY OF FORT LAUDERDALE'S SPECIFICATIONS.
- ALL CATCH BASINS AND DRAINAGE COLLECTION STRUCTURES SHALL BE DESIGNED WITH AN EIGHTEEN INCH (18") VERTICAL SUMP FROM THE INVERT ELEVATION (OR BOTTOM OF BAFFLE) TO THE BOTTOM OF THE STRUCTURE.
- DRAINAGE STRUCTURES SHALL BE CONSTRUCTED USING U.S. PRECAST (USP) U.S. FOUNDRY (USF) OR FLORIDA DEPARTMENT OF TRANSPORTATION STANDARD (FDOT) PRODUCTS AS SPECIFIED OR APPROVED EQUAL. ALL STORM DRAINAGE STRUCTURES MUST COMPLY WITH POMPANO BEACH DETAILS AND REGULATIONS.
- ROOF DRAIN CONNECTIONS TO DRAINAGE PIPE SHALL BE AS FOLLOWS:
 - FOR ADS N-12 CORRUGATED POLYETHYLENE DRAINAGE PIPE USE ADS DUAL WALL FABRICATED REDUCING SADDLE TEE 4" X 24" DIAMETER
 - FOR RCP DRAINAGE PIPE MAKE CONNECTION FDOT INDEX 280, CONCRETE COLLAR FOR JOINING MAINLINE PIPE AND STUB PIPE DETAIL.
- STORM DRAIN PIPE SHALL BE AS FOLLOWS:
 - REINFORCED CONCRETE PIPE (RCP) CLASS III PER ASTM C-76 OR HIGH DENSITY POLYETHYLENE (HDPE) PIPE FOR 24" OR LESS FOR PIPES AND HP (HIGH PERFORMANCE) STORM PIPE FOR PIPES 30" AND LARGER. ROOF LEADER PIPE MATERIAL SHALL BE PVC SDR-35.
 - CORRUGATED POLYETHYLENE PIPE PER AASHTO M294 JOINTS SHALL BE WATER TIGHT
 - ANY STORM PIPE USED MUST BE APPROVED BY LOCAL AUTHORITIES. CONTRACTOR SHALL SELECT THE MOST ECONOMICAL PRODUCT.
- CONTRACTOR SHALL CLEAN ALL PROPOSED DRAINAGE STRUCTURES AND PIPES UPON COMPLETION OF CONSTRUCTION.
- ALL DRAINAGE STRUCTURES SHALL CONFORM TO THE LATEST FDOT INDEX STANDARDS. CONTRACTOR SHALL SUBMIT SHOP DRAWINGS TO THE ENGINEER PRIOR TO COMMENCEMENT OF CONSTRUCTION.

MODERA POMPANO BEACH PREPARED FOR MCRT INVESTMENTS LLC POMPANO BEACH FLORIDA		Kintley»Horn © 2025 KIMLEY-HORN AND ASSOCIATES, INC. 8201 PETERS ROAD, SUITE 2200, PLANTATION, FL 33324 PHONE: 954-535-5100 FAX: 954-739-2247 WWW.KIMLEY-HORN.COM REGISTRY NO. 35106		SHEET NUMBER C-302	
DATE 9/4/2025		LICENSED PROFESSIONAL		BY DATE	
SCALE AS SHOWN		KHA PROJECT 043175014		REVISIONS	
DESIGNED BY GVF		DATE 9/4/2025		No.	
DRAWN BY EA		CHECKED BY GVF		DATE	

DRC

PZ25-12000028

10/15/2025